

English

Enjoy Nishitokyo

Nishitokyo City

GUIDE



Welcome to Nishitokyo!

"Nishitokyo City, the closest area from the center of Tokyo to explore the Jomon period, is located in the Tama area on the west side of Tokyo.

Nishitokyo was born from the merger of Tanashi City and Hoya City at the beginning of the 21st century. Nishitokyo keeps alive the history of life in the Jomon period and remnants of Musashino. It is a historical city that flourished as an outpost on the Ome Kaido during the Edo period.

In the city, there are attractive sightseeing spots such

as the Shitanoya Site, which is a national historic site and the largest site of the Jomon period in South Kanto, and the Tamarokuto Science Center, which is famous for its planetarium that has the world's largest dome and greatest number of projected stars.

Another attraction of Nishitokyo is its peaceful environment with a wealth of nature that includes farms and homestead woodlands while maintaining convenient access to the heart of Tokyo with five train stations."

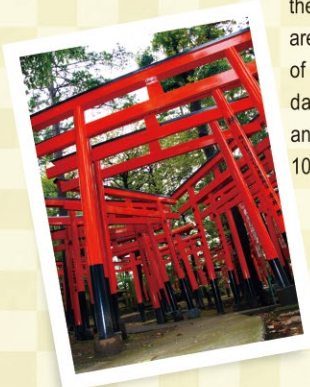
"IKOI-NA" is the fairy of the forest that protects the interaction of nature and living creatures. Ikoina lives in the Nishitokyo Ikoino Mori Park. You can take pictures of the fairy and shake its hand when you see it at city events.



IKOI-NA © SHIN-EI / NISHITOKYO-CITY

Higashi Fushimi Inari Jinja Shrine

Higashi Fushimi Inari Jinja Shrine was established as a branch shrine from Fushimi Inari Taisha in Kyoto to be the guardian spirit for Kanto in 1929. While there are more than 3,000 Inari shrines nationwide, Higashi Fushimi Inari Jinja Shrine is the only shrine in Kanto that was disenshrined from the headquarters in Kyoto. There are many visitors at the beginning of the year and on Setsubun (last day of winter). The main shrine and grounds were selected in the 100 Views of New Tokyo.



The largest site of the Jomon period in South Kanto

Nationally-designated Historical Site, Shitanoya Site

"Shitanoya Site is on a hill overlooking the Shakujii River. Village site from 4,000 to 5,000 years ago during the middle of the Jomon period were discovered on the Shitanoya Site, the largest site in South Kanto. Shitanoya Site Park is part of the site and you can see rebuilt pit-dwellings. Children can play in the plaza in the park center while also learning history. Shitanoya Site was designated as a historical site in 2015."



Pit dwelling frame of the Jomon period (Restoration)

Local History Museum

This facility collects, stores, and displays historical artefacts related to the city. The displays include stone artifacts from the Old Stone Age and earthenware from the Jomon period such as artifacts excavated from the Shitanoya Site, stone monuments from the Muromachi period, wooden placards from the Edo period, and agricultural tools that were used in the recent past.



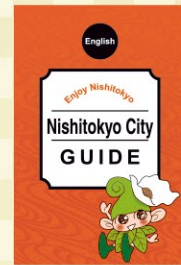
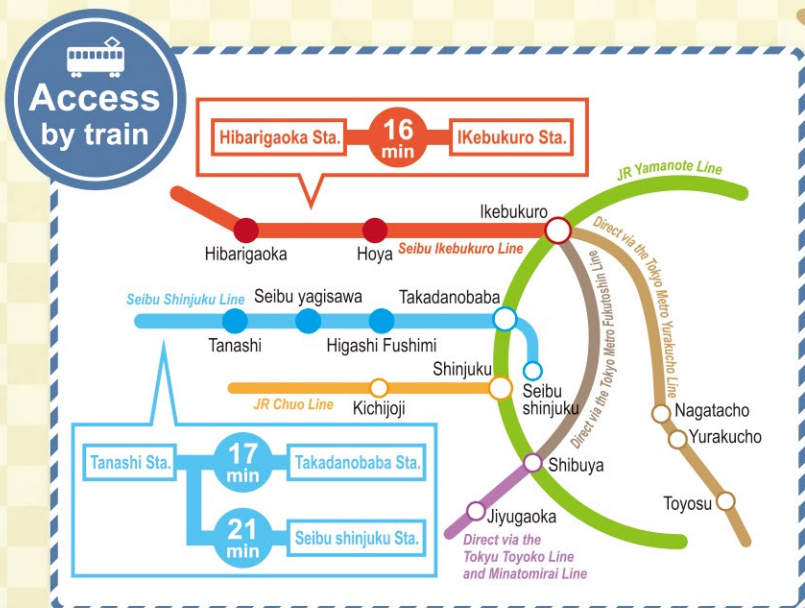
Of the dynamic decoration the Katsusaka-type pottery



Shitanoya Village "Shita" and "Noya" ©T&K / NISHITOKYO-CITY

Higashi Fushimi Park

This park is next to Higashi Fushimi Inari Jinja Shrine. Shakujii River runs through the southern end of the park and the park is filled with greenery and water. You can relax at the multipurpose plaza and resting facilities, and enjoy recreational activities. The highlight of the park is the long roller slide that is very popular with children.



Available in multiple languages

If you want to know more
Nishitokyo City Web
Nishitokyo City Official Website



Nishitokyo City Map



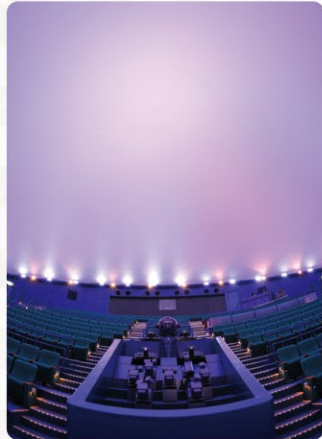
"Illumination in front of Tanashi Station (middle of November to December)"

02 Tamarokuto Science Center

The planetarium has been certified as the world's most advanced facility with the largest dome theater in the world at 27.5 meters in diameter, which projects 140 million stars, the largest number in the world. You can enjoy dynamic imagery.

ADDRESS 5-10-64 Shibakubocho
ACCESS 26-minute walk from the North Exit of Tanashi Station

Y Admission: 500 yen for adults, 200 yen for children (other ticket packages are also available)
C 9:30 - 17:00 (entry until 16:00)
X Mondays (open on national holidays and closed the following day). The day after a national holiday, year-end and New Years, and machinery maintenance days



The inside of the planetarium

01 Local History Museum

ADDRESS 4-5-6 Nishiharacho
ACCESS 24-minute walk from the North Exit of Tanashi Station

Y Free
C 10:00 - 17:00 (open on national holidays)
X Mondays and Tuesdays
Note: Closed from 1/1 to 1/4 and 12/28 to 12/31



History diorama of Nishitokyo city



05 Institute for Sustainable Agro-ecosystem Service, University of Tokyo

The institute has a wealth of green scenery, and vast farmlands and rice fields that are tended by large machinery. You can experience and learn the ecology of various seasonal flowers and insects.

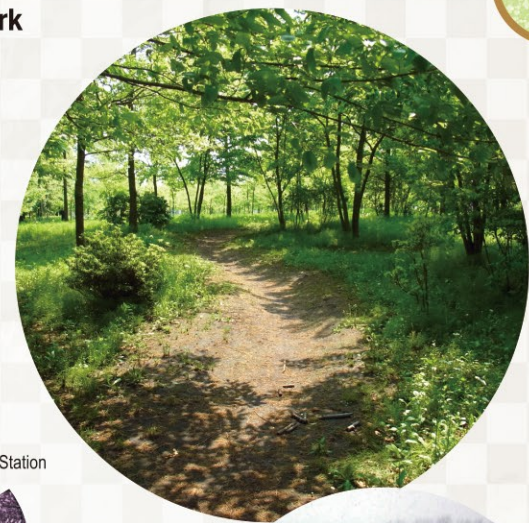
ADDRESS 1-1-1 Midoricho
ACCESS 15-minute walk from the North Exit of Tanashi Station

Y Viewing season for sunflowers: July to August

06 Nishitokyo Ikoino Mori Park

The park was constructed to commemorate the birth of Nishitokyo City and is the largest municipal park in the city at roughly 4.4 hectares in size. The theme of the park is "a space for nature, humans, and living creatures to interact" and you can enjoy various seasonal nature as well as kick or throw a ball around, have a barbecue, and play in a playground.

ADDRESS 3-2 Midoricho
ACCESS 22-minute walk from the South Exit of Hibiagaoka Station



07 Higashi Fushimi Inari Jinja Shrine

ADDRESS 1-5-38 Higashi Fushimi
ACCESS 11-minute walk from the South Exit of Higashi Fushimi Station

Y Opens at 6:30 and closes at 17:00



03 Sky Tower Nishitokyo

"This is a 195-meter broadcast tower and a symbol of the city. The tower light colors change depending on the weather forecast for the following morning. Note: Tours of the inside are not available."

ADDRESS 5-8-2 Shibakubocho

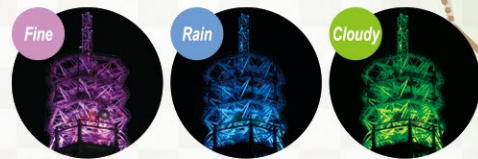


Image provided by: Tanashi Tower Corporation

04 Tanashisan Sojiji Temple

This temple was created in 1875 through the merger of three temples: Saikoji, Mitsuzoin, and Kannonji. Tanashisan Sojiji is counted as the 10th pilgrimage of the Kanto 36 Fudo and was selected as one of the 100 Views of New Tokyo.

ADDRESS 3-8-12 Tanashicho
ACCESS 6-minute walk from the North Exit of Tanashi Station



◀ Zelkova, a city-designated cultural property

Institute for Sustainable Agro-ecosystem Service, University of Tokyo

08 National Historic Site, Shitanoya Site

ADDRESS 6-4 Higashi Fushimi
ACCESS 7-minute walk from the South Exit of Higashi Fushimi Station



09 Tanashi Jinja Shrine

The main hall has been designated as a Tokyo Cultural Property. A famous Edo sculpture, Shunpyo Shimamura, provided the sculpture work for the main hall, which shows his high level of skill. The design of the Sanshuden (assembly hall) is modern Japanese architecture designed by an architect in the Home Ministry.

ADDRESS 3-7-4 Tanashicho
ACCESS 6-minute walk from the North Exit of Tanashi Station

Y Viewing season for ginkgo: November



▲ The rake of the mascot equals the Torinichi Fair (November)

Sky Tower Nishitokyo

Tamarokuto Science Center

Local History Museum

Nishitokyo Ikoino Mori Park

Local History Museum

Institute for Sustainable Agro-ecosystem Service, University of Tokyo

Tanashi Jinja Shrine

Tanashisan Sojiji Temple

Higashi Fushimi Inari Jinja Shrine

Higashi Fushimi Park

National Historic Site, Shitanoya Site

Tanashi Jinja Shrine

miura-ori

特許 第3644945号 商標 第4583671~2号 No.1448
miura-ori lab 03-6457-7272 ©Koryo Miura.1978

Issued by : Nishitokyo City
Edited by : Planning Division, Secretary and Public Relations Department
Produced by : BUYODO CO.,LTD.
TEL : 042-464-1311 (Main phone number)
Issued in : March 2017



R270

Haneda Airport

Narita Airport



Train/



Subtle bus

Shinjuku Sta.



JR Yamanote Line
9 min



JR Yamanote Line
4 min

Ikebukuro Sta.

Takadanobaba Sta.



Seibu Ikebukuro Line



Seibu Shinjuku Line

Semi Exp.
17 min

Semi Exp.
18 min

Hoya Sta.

Higashi Fushimi Sta.

Express
16 min

Local
1 min

Hibarigaoka Sta.

Seibu yagisawa Sta.

Express
17 min

Tanashi Sta.